

OVERVIEW

Exploding data growth and indiscriminate backups can strain overburdened IT resources without metrics and usage visibility across complex IT environments. In addition, countless compliance and capacity requirements force IT organizations to constantly wrestle with these challenges:

- How much storage capacity do we have?
- Who's consuming it and at what rate?
- How can we avoid overprovisioning storage and buying more too soon?
- Were backups completed successfully and did they meet compliance requirements?
- What are our risks?

APTARE IT Analytics is the only extensible platform offering unified insights for backup, storage and virtual infrastructure in a heterogeneous IT environment across on-premises and hybrid clouds.

APTARE IT Analytics™ offers unmatched and comprehensive IT analytics delivering actionable insights through a single-pane-of-glass.

With APTARE IT Analytics you can:

- Optimize storage and costs.
- Mitigate risk to meet service-level agreements (SLAs).
- Streamline backup compliance and gain visibility into backup performance and integrity.

OPTIMIZE STORAGE AND COSTS

With today's global, complex and virtualized storage environments, it's easy to lose track of what's consuming your storage and ultimately, if it's even being used. APTARE IT Analytics examines the end-to-end connectivity of utilized storage and discovers hard-to-find categories of "dark" storage.

From orphaned cloud snapshots and volumes to decommissioned virtual machines (VMs and undiscovered logical unit numbers (LUNS), APTARE IT Analytics quickly identifies reclaimable storage, so you can get more out of what you already have and defer future storage purchases (see Figure 1).

The console provides:

- Accurate capacity planning for future needs.
- Effective capacity management of current storage resources both on-premises and in the cloud.
- "Easy Buttons" that provide essential information on where resources are used effectively and where they are misused.



Figure 1. APTARE IT Analytics' storage console helps organizations reduce complexity, proactively manage storage and optimize performance.

MITIGATE RISKS TO MEET SLAs

Preventing unplanned outages requires tracking and trending all data, with the ability to see consumption trends over time. APTARE IT Analytics protects data through preemptive safeguarding procedures. By addressing the infrastructure risk for backup, recovery and storage operations, APTARE IT Analytics prevents downtime for critical applications and potential loss of critical data. It supplies both data and business analytics, managing backup compliance and storage performance. (See Figure 2.)

Report templates include:

- **Risk Mitigation Analysis**—Displays an interactive chart of risk categories, identifying opportunities for risk mitigation.
- **Risk Mitigation Trends**—Displays risk mitigation trends over time, allowing administrators to uncover risk-prone areas and assess areas within the enterprise that may be at risk of failing. Users can configure rules to isolate specific conditions relevant for their environment.

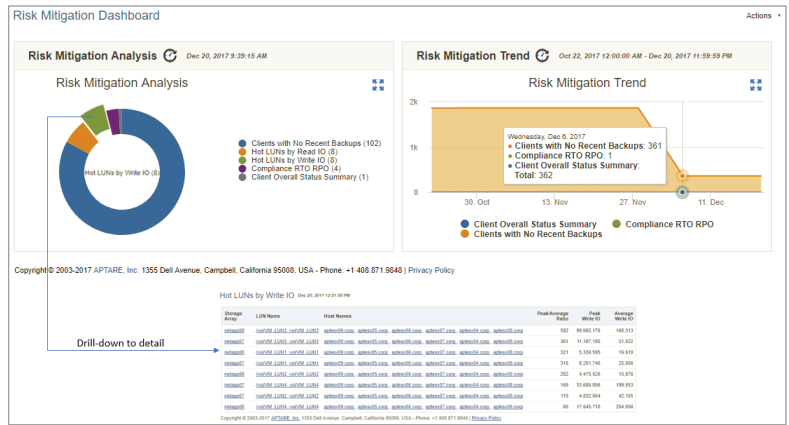


Figure 2. APTARE IT Analytics' risk mitigation dashboard tracks data from end-to-end as it flows through the data center, identifying events that could impact SLAs.

STREAMLINE BACKUP COMPLIANCE AND GAIN VISIBILITY INTO BACKUP PERFORMANCE AND INTEGRITY

Meeting backup compliance and corporate SLAs requires accurate and actionable insights to streamline the auditing process and ensure system recoverability. APTARE IT Analytics provides insights that reduce data protection complexity and mitigate policy conflicts and human error. It automatically collects backup and data protection events, allowing access by internal and external auditors whenever it's required or on demand. (See Figure 3.)

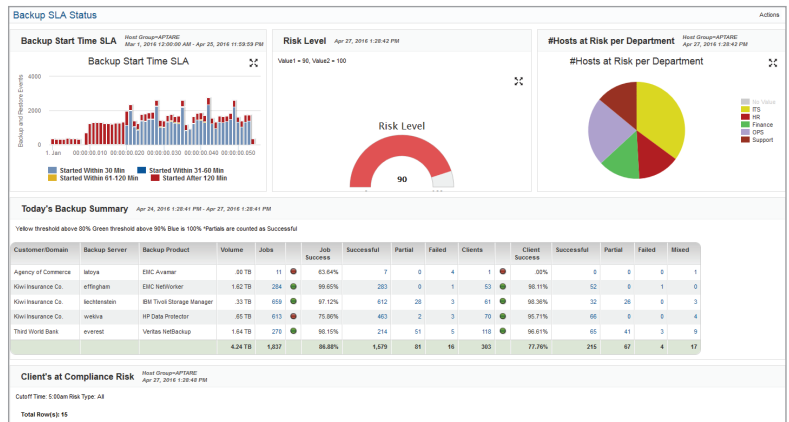


Figure 3. Backup Manager dashboard that offers real-time insights to easily identify backup failures and trends.

Instantly view successful, partial or failed backups and get the insights needed to solve damaging backup risks such as:

- **Unprotected Data Discovery**—Reduce the exposure of unprotected data by automatically identifying clients and data sets that aren't protected under a backup policy.
- **Suspect Backup Identification**—Eliminate "false positives" by identifying partial or failed backups reported as successful by the backup software.

APTARE IT Analytics includes out-of-the-box compliance reports to meet internal SLAs and pass external regulatory audits. Reporting tools are also available to create custom reports. Compliance features include:

- **Disk Usage and Performance**—View and analyze the performance of your drives by tracking average job write speed. The report shows disk usage and total gigabytes written to disk.
- **Drive Performance Summary**—Identify drives that are underperforming. View the number of backup jobs and quantity of data written to the drive.
- **Client Usage**—Load balance efficiently by identifying which clients are the most heavily used based on the number of backup jobs and gigabytes.

- **Backup Appliances**—Plan and predict capacity and utilization from the backup software and the appliance perspective. APTARE IT Analytics offers comprehensive reporting on appliances such as EMC Data Domain and Veritas NetBackup Appliances.
 - Identify when the appliance may run out of space using powerful reports to provide forecasting and trending of appliance capacity usage over time.
 - Leverage performance monitoring and reporting of the appliance speed, an audit trail for history and trending and asset management to make appliance management easy and intuitive.

WHAT'S INCLUDED IN APTARE IT ANALYTICS?

APTARE IT Analytics offers a single-pane-of-glass that provides deep analytics and correlated insights across the critical components of your IT structure, both on-premises and in the cloud. Available features include:

- **Backup Manager**—Displays insights that can reduce the complexity of data protection while reducing human error and identifying problems before they occur.
- **Storage Management Capabilities**—Combined capabilities to include:
 - **Capacity Manager**—Provides end-to-end storage capacity reporting from hosts to storage arrays, allowing for increased storage usage efficiency.
 - **Fabric Manager**—Provides confident forecasting by capturing key performance metrics and details of SAN resources across all platforms.
 - **Virtualization Manager**—Provides valuable insight into storage resource management within a virtualized environment.
- **Replication Manager**—Ensures that policies and SLAs for replication of mission-critical application and database data are being met.

These combined features work together to provide a complete picture of your IT environment. With APTARE IT Analytics you can identify wasted resources and enact specific policies and practices to optimize storage and costs, mitigate risk and streamline compliance across your IT organization.

APTARE IT Analytics supports a wide range of cloud environments, storage systems, backup solutions, virtualization technologies, SAN products, replication technologies, operating systems and web browsers. Please see the Supported Environments document for the full list. APTARE IT Analytics also provides a software development kit for users to quickly create data connectors for storage and backup systems that are not listed in the Supported Environments document.

ABOUT VERITAS

Veritas Technologies is a global leader in data protection and availability. Over 50,000 enterprises—including 99 of the Fortune 100—rely on us to abstract IT complexity and simplify data management. Veritas Enterprise Data Services Platform automates the protection and orchestrates the recovery of data everywhere it lives, ensures 24/7 availability of business-critical applications, and provides enterprises with the insights they need to comply with evolving data regulations. With a reputation for reliability at scale and a deployment model to fit any need, Veritas supports more than 500 data sources and over 150 storage targets, including 60 clouds. Learn more at www.veritas.com. Follow us on Twitter at [@veritastechllc](https://twitter.com/veritastechllc).

2625 Augustine Drive, Santa Clara, CA 95054
+1 (866) 837 4827
www.veritas.com

For specific country offices and contact numbers, please visit our website.
www.veritas.com/company/contact

VERITAS™